

Customer :

customer

Customer part :

customer part

Comment :

Comment

S1=2.34

S2=2.64

Tmax=463

Tp S2=502.0

PI=0.47

HI=69

Sample =1729.80

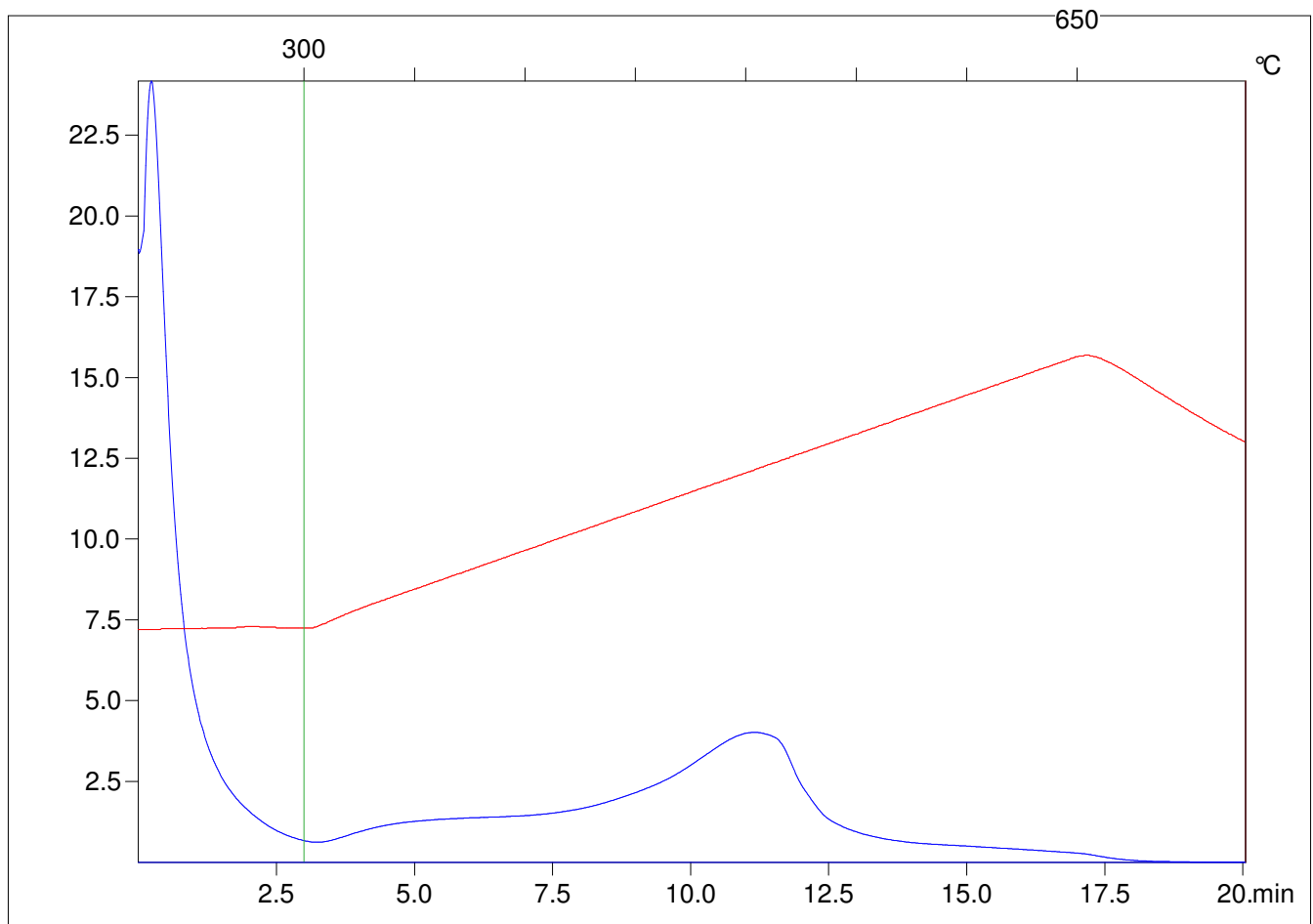
Method =Bulk Rock

Cycle=Basic

KFID(10\*9)=1444

Qty =70.4

TOC=3.83



C:\VINC\PK2\_1792\PK048.R00 : FID pyrolysis graphic

State

Pyro Status

Oxi Status